

Vanishing Tumor of the Lung

Farrah A. Antonio, Mahamood Edavalath and Joseph M. Pappachan*

Department of Endocrinology and Diabetes, University Hospital of North Staffordshire, Stoke-on-Trent, United Kingdom

ARTICLE INFO

Article history:

Received: 8 January 2014

Accepted: 5 May 2014

DOI 10.5001/omj.2015.47A

A 90-year-old woman presented to the emergency department of University Hospital of North Staffordshire with a one-day history of breathlessness and chest discomfort. She had no history of significant respiratory or cardiovascular disease.

Clinical examination revealed elevated jugular venous pressure, minimal pedal edema, a systolic cardiac murmur, and bibasal lung crackles. An electrocardiograph demonstrated left bundle branch block and left axis deviation. A chest radiograph revealed the abnormality shown by the arrow in

Figure 1 which disappeared after two days of in-hospital treatment [Figure 2].

Question

1. What is the clinical diagnosis?

Answers to the quiz, and the full article, can be found online at www.omjournal.org.

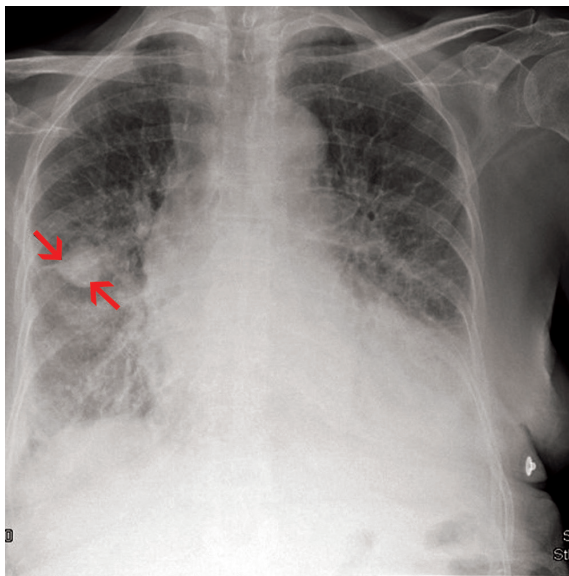


Figure 1: Radiograph of the chest at the time of admission.

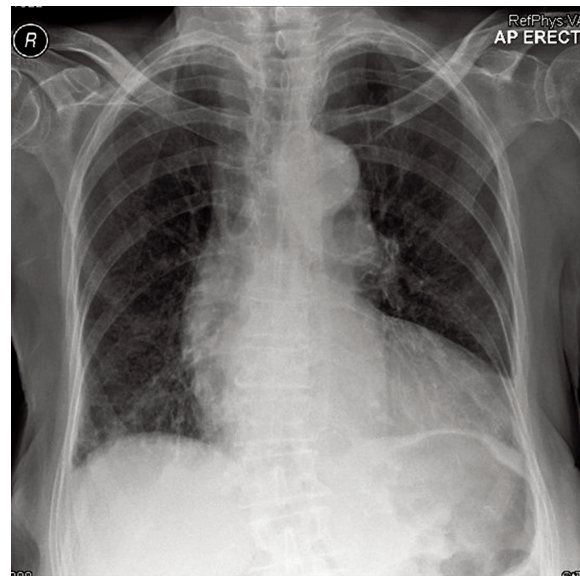


Figure 2: Radiograph of the chest after two days of inpatient treatment.

CME CREDIT

You may earn CME credits by reading the quiz and answering the questions online. Answers for the quiz can be found online (www.omjournal.org). CME credits are awarded by Oman Medical Specialty Board by the Continued Professional Development Department.