

# A 45-year-old Male with Cough, Shortness of Breath and Constitutional Symptoms

Mansoor Mehmood<sup>1</sup>, Ruba A. Halloush<sup>2</sup> and Faisal A. Khasawneh<sup>3\*</sup>

<sup>1</sup>Department of Internal Medicine, Texas Tech University Health Sciences Center, Texas, USA

<sup>2</sup>Amarillo Pathology Group, Texas, USA

<sup>3</sup>Infectious Diseases, Texas Tech University Health Sciences Center, Texas, USA

## ARTICLE INFO

### Article history:

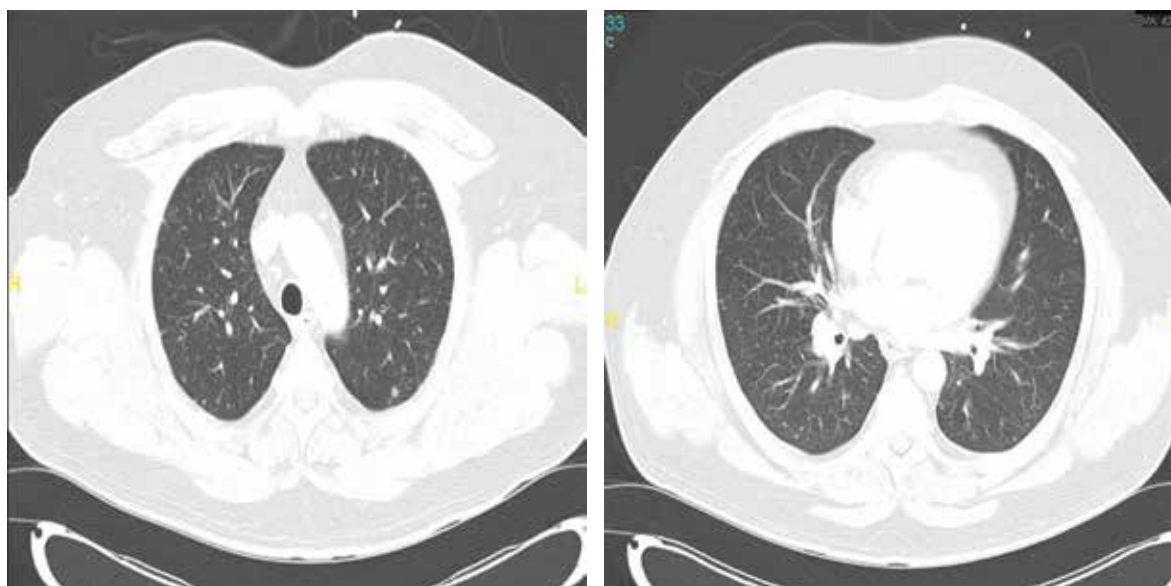
Received: 21 April 2014

Accepted: 5 May 2014

DOI 10.5001/omj.2015.95

**A** 45-year-old painter was admitted with a five day-history of a dry cough, headache, shortness of breath, and fever. His complaints started 10 days after he finished the remodeling of an old house. His physical exam was non-focal, and he had no rashes or lymphadenopathy. His blood tests showed white blood cell count of  $12.7 \times 10^9/\mu\text{L}$  and his kidney and

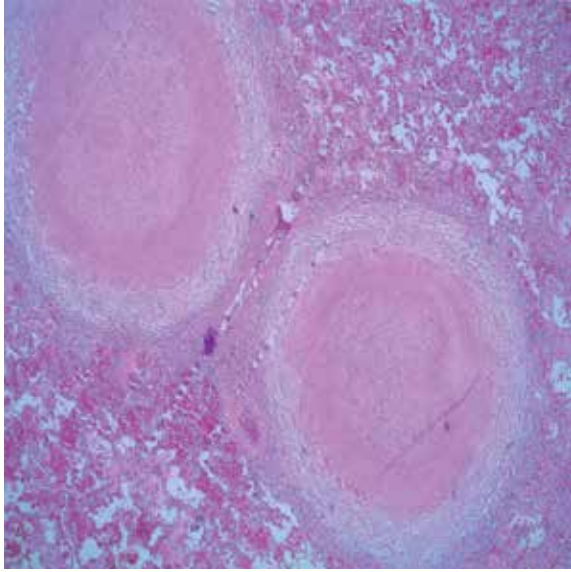
liver function tests were within normal limits. Lumbar puncture results and human immunodeficiency virus infection (HIV) test were negative. His chest X-ray showed bilateral interstitial opacities. Lung computed tomography scans showed bilateral parenchymal micronodules. The patient's blood and bronchoalveolar lavage cultures were negative. He was diagnosed with atypical community-acquired



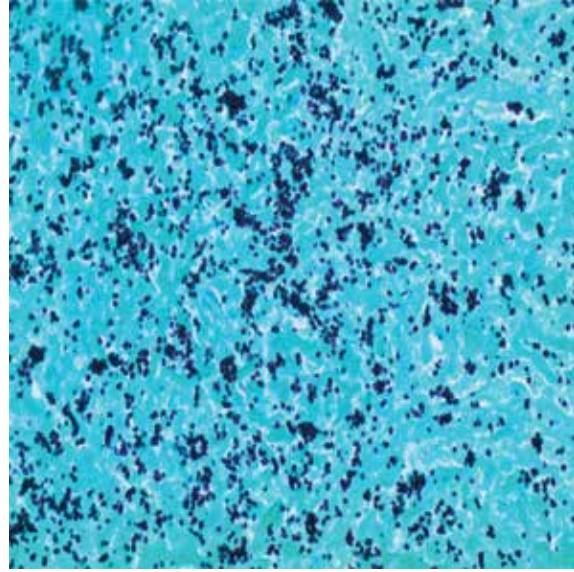
**Figure 1:** Computed tomography scans of two sections of the patient's chest showing bilateral pulmonary nodules of variable size.

## CME CREDIT

You may earn CME credits by reading the quiz and answering the questions online. Answers for the quiz can be found online ([www.omjournal.org](http://www.omjournal.org)). CME credits are awarded by Oman Medical Specialty Board by the Continued Professional Development Department.



**Figure 2:** Hematoxylin and eosin stained section of the lung shows two well-defined granulomas with central necrosis, magnification = 40 ×.



**Figure 3:** Gomori methanamine silver stain shows small budding yeast consistent with histoplasma. The yeast clustering indicates the intracellular location within macrophages, magnification = 400 ×.

pneumonia (CAP) and discharged on a course of azithromycin.

The patient was lost to follow-up until he presented to our hospital four months later with constitutional symptoms. He reported night sweats and fever, poor appetite, dry cough, and shortness of breath. Follow-up chest imaging showed an increase in the size of the pulmonary nodules [Figure 1a and 1b]. He underwent video-assisted thoracoscopy with a lung biopsy. Biopsy staining is shown in Figure 2 and 3.

### *Questions*

1. What is your diagnosis?
2. How would you treat this patient?

*Answers to the quiz, and the full article, can be found online at [www.omjournal.org](http://www.omjournal.org).*