

The Doppelgänger

Ahmed Naiem¹, Ahmed Al-Harthy¹, Ibrahim Abdelhady¹, Rashid Al-Sukaiti², Edwin Stephen¹ and Khalifa N. Al-Wahaibi^{1*}

¹Department of Surgery, Sultan Qaboos University Hospital, Muscat, Oman

²Department of Radiology, Sultan Qaboos University Hospital, Muscat, Oman

ARTICLE INFO

Article history:

Received: 2 June 2015

Accepted: 29 June 2015

Online:

DOI 10.5001/omj2016.31

A 37-year-old man presented to the vascular surgery outpatient clinic at Sultan Qaboos University Hospital for a second opinion following an incidental computed tomography (CT) scan finding that was performed for a work-related promotion. He gave a history of being involved in a motor vehicle collision 18 years prior that required a laparotomy and splenectomy, from which he completely recovered. On presentation, he had no complaints. His physical

examination was unremarkable. His CT scan images are shown in Figure 1.

Questions

1. What is the abnormality on the CT-scan?
2. What is the clinical significance of such a finding?

Answers to the quiz, and the full article, can be found online at www.omjournal.org.

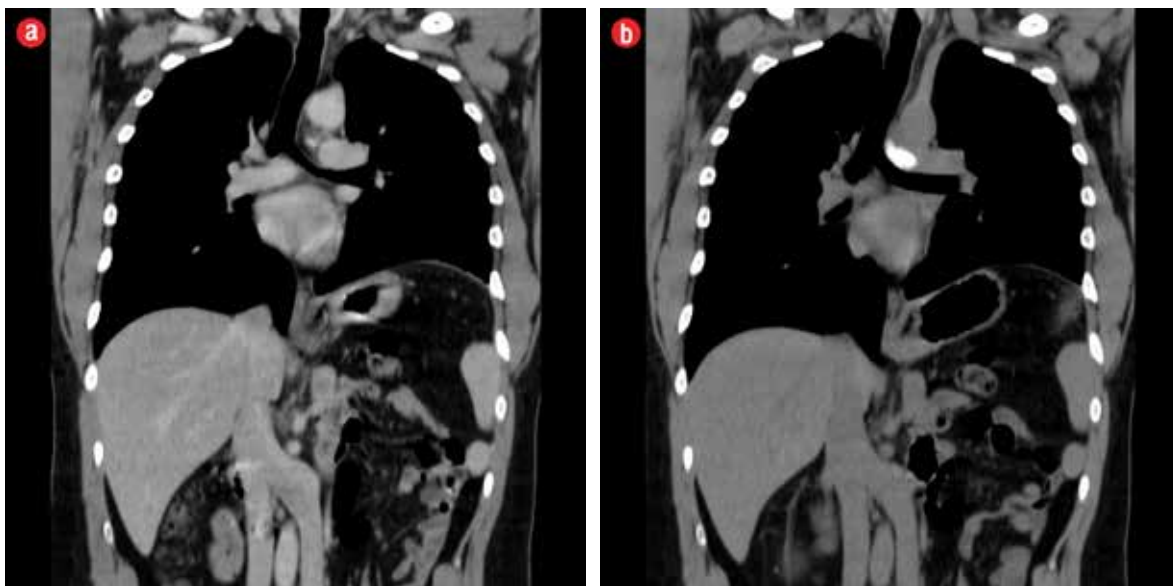


Figure 1: (a) Plain and (b) contrast chest computed tomography images of the patient.

CME CREDIT

You may earn CME credits by reading the quiz and answering the questions online. Answers for the quiz can be found online (www.omjournal.org). CME credits are awarded by Oman Medical Specialty Board by the Continued Professional Development Department.